

# VF Series Universal Voltage Photoelectric Sensor

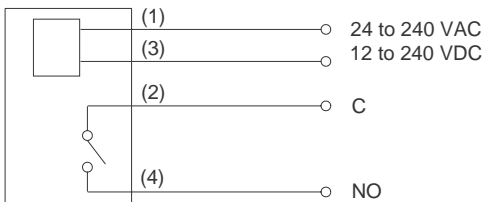
## Specifications

Type	VF Series Universal Voltage Photoelectric Sensor			
	Thru-beam Emitter	Thru-beam Receiver	Diffuse Reflective	Polarized Retro-reflective *
Model Number	<b>TO30K-VF-ADC</b>	<b>RO30K-VF-RT-J</b>	<b>OS1K-VF-RT-J</b>	<b>OR10KF-VF-RT-J</b>
Sensing Range	30 meters		1 meter	10 meters
Hysteresis	< 10 %			
Repeatability	< 5 %			
Supply Voltage	24 ~ 240 VAC / 12 ~ 240 VDC incl. 10% ripple			
Current Consumption	< 2 VA			
Max. Switching Freq.	55 Hz			
Control Output	SPST Relay contact, 3 A @ 250 VAC / 220 VDC Max.			
Output Operation	Light On / Dark On Selectable			
Timer Function	On delay, Off delay and One shot delay - 0 to 5 seconds			
Response Time	< 20 msec.			
Min. Detectable Object	> 20 mm		> 6 mm	> 10 mm
Light Source	IR LED	-----	IR LED	Red LED
Sensitivity Adjustment	3/4 turn adjustment potentiometer			
Indicators	Output LED			
Conformity	CE			
Ambient Temperature	-25° to +60°C			
IP Protection	IP 66			
Material	Housing: PBT, Lens: Acrylic			



\* Does not include reflector. Must be ordered separately.

## Electrical Connection



The Transmitter does not have connections on pins 2 and 4.

## Dimensions (Unit: mm)

### VF Series

